

LHS 91: The intelligent power giant.

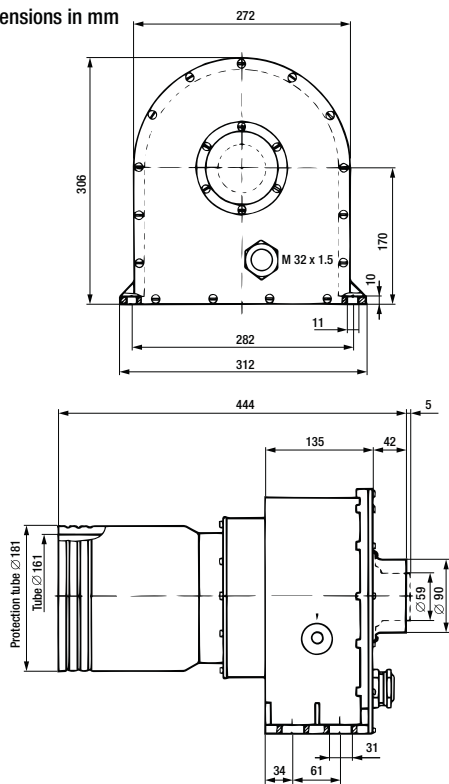
With power of up to 40 kW, the LHS 91 is the tool for even the most demanding of heating applications. With this performance it is even capable of replacing many gas-fired heaters.

Air heater LHS 91



Technical data LHS 91		BASIC	SYSTEM
Max. air outlet temperature	°C	650	650
Min. air flow acc. to graph	page 35		
Max. air inlet temperature	°C	50	50
Max. ambient temperature	°C	60	60
Weight	kg	13.5	13.5
Mark of conformity		CE	CE
Protection class I		⊕	⊕

Installation dimensions in mm



Tension	V ~	3 x 230	3 x 400	3 x 480	3 x 480	
Power cons.	kW	28	11	32	32	40
BASIC	Order no.			100.764	100.766	139.206
SYSTEM	Order no.	140.357	140.358	140.356	146.862	145.685

90 mm air inlet nozzle as standard,
(59 mm option available, 107.232 connection nozzle for hose Ø 60 mm)

Combination possibilities

- Leister air heater at maximum heat power and without nozzle with Leister blower at 50 Hz, 3 m hose length and unimpeded air outflow.
- Hot-air temperature 3 mm after air outlet, measured at the hottest point.
- Air flow at 20°C, 101.3 kPa compliant with ISO 6358.

Power Typ	Number LE x power cons. kW	Air flow l/min.	Temperature °C
ASO	2 x 32	2 x 4200	500
AIRPACK	1 x 32	1 x 3300	540

Air flow and temperature values may deviate from those above based on the design of the entire hot-air system (including nozzles, air hoses, environmental conditions).

Two air heaters and two blowers used to dry impregnated Eternit piping. Two wide slot nozzles ensure the air is evenly distributed.



Air heater

LHS 91 BASIC



Heating power not adjustable

Air heater

LHS 91 SYSTEM

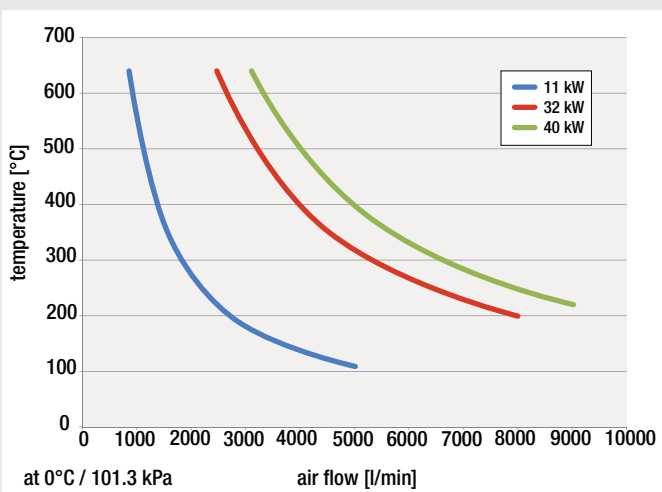


Heating power or temperature steplessly adjustable with potentiometer or remote control interface

Protection against heating element and device overheating with alarm output

Remote control interface for external temperature controllers (Leister CSS, or PLCs)

Air Heaters
Controllers



Accessories  

Utilizing precisely controlled hot-air to shrink PE sleeves on cans.



Accessories LHS 91 (∅ 161 mm)

	<p>125.319 Flange connector, push-fit a = 192 mm</p>
	<p>107.230 Round nozzle, push-fit d = 100 mm</p>
	<p>107.233 Extension nozzle, push-fit (a × b) 400 × 100 mm</p>
	<p>Tubular nozzle, push-fit (a × b × c) 107.243 1500 × 1350 × 4 mm 105.869 2000 × 1340 × 4 mm</p>
	<p>Wide slot nozzle, push-fit (a × b) 107.235 500 × 15 mm 107.234 1200 × 10 mm 105.856 1600 × 8 mm 105.859 2000 × 10 mm</p>